



# Ashton Hayes Primary School

Church Road, Ashton Hayes, Chester, Cheshire CH3 8AB

Headteacher: Mr Matthew Haver BA Hons, PGCE, NPQH



Cheshire West  
and Chester

Telephone 01244 307408

[admin@ashtonhayes.cheshire.sch.uk](mailto:admin@ashtonhayes.cheshire.sch.uk)

[www.ashtonhayes.cheshire.sch.uk](http://www.ashtonhayes.cheshire.sch.uk)

*Aspire to be Amazing!*

27<sup>th</sup> February 2020

Dear Parent / Carer,

## Re: Coronavirus

You're likely aware of the outbreak of coronavirus in China and the subsequent confirmed cases in the UK. At Ashton Hayes Primary School, we take the health and safety of our pupils and staff very seriously, so we're sharing guidance from Public Health England on steps you may consider taking.

There's currently no cause for concern at the school, and there is no reason why your children should not continue to attend as normal. We will keep you informed about any developments and ensure we're keeping the school clean to prevent the spread of any virus.

### Prevent the spread of infection

Make sure you and your children follow these general principles to prevent spreading any respiratory virus:

- Wash your hands often – with soap and water for at least 20 seconds, or an alcohol-based sanitiser if soap and water aren't available
- Avoid touching your eyes, nose, and mouth with unwashed hands
- Avoid close contact with people who are sick
- If you feel unwell, stay at home and don't attend work or school
- Cover your cough or sneeze with a tissue, then throw the tissue in a bin
- Clean and disinfect frequently touched objects and surfaces in the home
- If you're worried about your symptoms, please call NHS 111 – don't go directly to your GP or other healthcare environment

Please see 'Advice on the coronavirus for educational settings' leaflet attached.

### If you or your children have returned from anywhere in Hubei province in past 14 days

If you or your children are currently well:

- Stay indoors and avoid contact with other people as you would with flu viruses
- Call NHS 111 to inform them of your recent travel to the area.
- Your other family members don't need to take any precautions or make any changes to their own activities

If you become unwell:

- Please call NHS 111 immediately in order for you to be assessed by an appropriate specialist in hospital, as quickly as possible
- Follow the home isolation advice sheet <https://www.gov.uk/government/publications/wuhan-novel-coronavirus-self-isolation-for-patients-undergoing-testing/advice-sheet-home-isolation>

If you or your children have returned from a specified country in last 14 days (see list below) we would appreciate that you inform the school and follow the guidance from Public Health England.





# Ashton Hayes Primary School

Church Road, Ashton Hayes, Chester, Cheshire CH3 8AB

Headteacher: Mr Matthew Hover BA Hons, PGCE, NPQH



Cheshire West  
and Chester

Telephone 01244 307408

[admin@ashtonhayes.cheshire.sch.uk](mailto:admin@ashtonhayes.cheshire.sch.uk)

[www.ashtonhayes.cheshire.sch.uk](http://www.ashtonhayes.cheshire.sch.uk)

*Aspire to be Amazing!*

\*See updated advice letter received by school 26.02.20 for recommendations and countries.

The specified countries are:

- China (other than Hubei)
- Hong Kong
- Japan
- Macau
- Malaysia
- Singapore
- South Korea
- Taiwan
- Thailand

Symptoms to look out for:

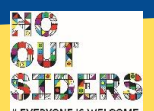
If you've returned from the specified countries or Hubei, look out for the following symptoms:

- Cough
- Difficulty in breathing
- Fever (a temperature of 38 degrees C or higher)

If you have any of these symptoms: If it's an emergency, call 999 and tell them which country you have returned from in the past 14 days.

Many thanks and kind regards,

Mr Hover





Public Health  
England

## Advice on the coronavirus for places of education

### How serious is the coronavirus?

- it can cause flu-like symptoms, including fever, cough & difficulty breathing
- the infection is not serious for most people, including children
- there is currently no vaccine
- most people get better with enough rest, water to drink and medicine for pain

### How likely are you to catch the virus?

- you can only catch it if you have been close to a person who has the virus
- the chance of being in contact with the virus is currently low in the UK
- if you have travelled to areas where many people are infected, your chance of catching the virus is higher, i.e. China and any affected areas

### How can you stop coronaviruses spreading?

#### If you need to cough or sneeze



Catch it  
with a tissue



Bin it



Kill it  
by washing  
your hands with  
soap & water or  
hand sanitiser

#### You should wash hands with soap & water or hand sanitiser



After breaks  
& sport  
activities



Before  
cooking  
& eating



On arrival at  
any childcare  
or educational  
setting



After using  
the toilet



Before  
leaving  
home



Try not to touch your  
eyes, nose, and mouth  
with unwashed hands



Do not share items that come  
into contact with your mouth  
such as cups & bottles



If unwell do not share  
items such as bedding,  
dishes, pencils & towels



Stop germs spreading with our e-Bug resources on hand and respiratory hygiene lesson plans for KS1, 2 and 3: [campaignresources.phe.gov.uk/schools](http://campaignresources.phe.gov.uk/schools)

### What should you do if you feel unwell?

Keep away from others and stay at home to stop the infection spreading. Avoid public transport if you think you have symptoms of coronavirus. If you become unwell at a place of education, tell a member of staff and let them know if you have travelled to any other countries in the last 14 days.

If your staff member or parent thinks you have symptoms of coronavirus, they should call **NHS 111** for advice. Follow the UK Government advice for childcare or educational settings [gov.uk/government/publications/guidance-to-educational-settings-about-covid-19](http://gov.uk/government/publications/guidance-to-educational-settings-about-covid-19). Parents can visit **NHS.UK** to find out more information. Teachers and support staff should follow the UK Government advice.

Staff, students and pupils who have returned from Wuhan and Hubei Province in China should self isolate, and NOT attend education or work for 14 days. See **NHS.UK** for advice on coronavirus.

**If there is an emergency, call 999 immediately**





Map showing specified areas of China, as at 25 February 2020.

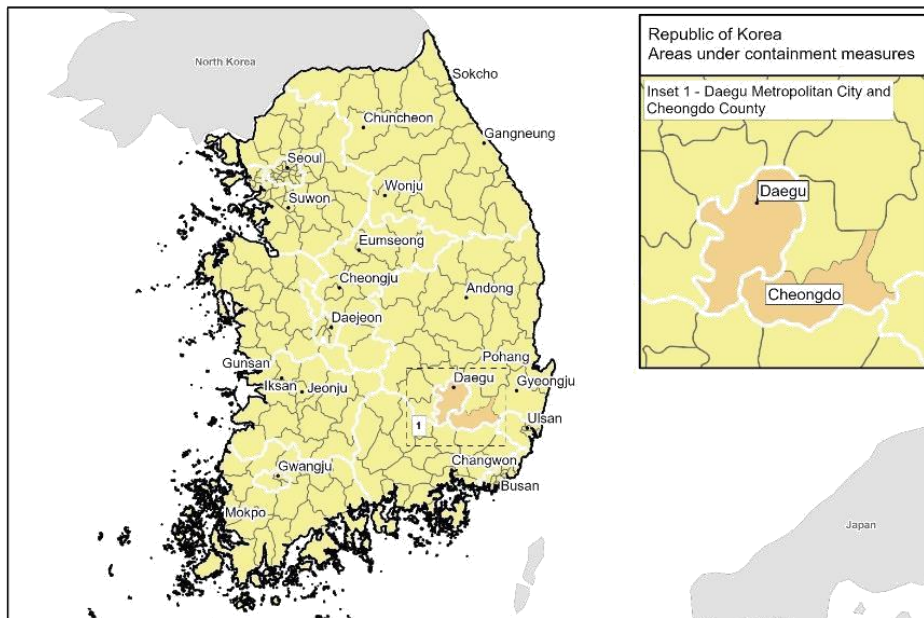


**Yellow area** – Category 2

**Orange area** – Category 1.

The specified area is Hubei province (includes Wuhan).

Map showing specified areas of the Republic of Korea, as of 25 February 2020.

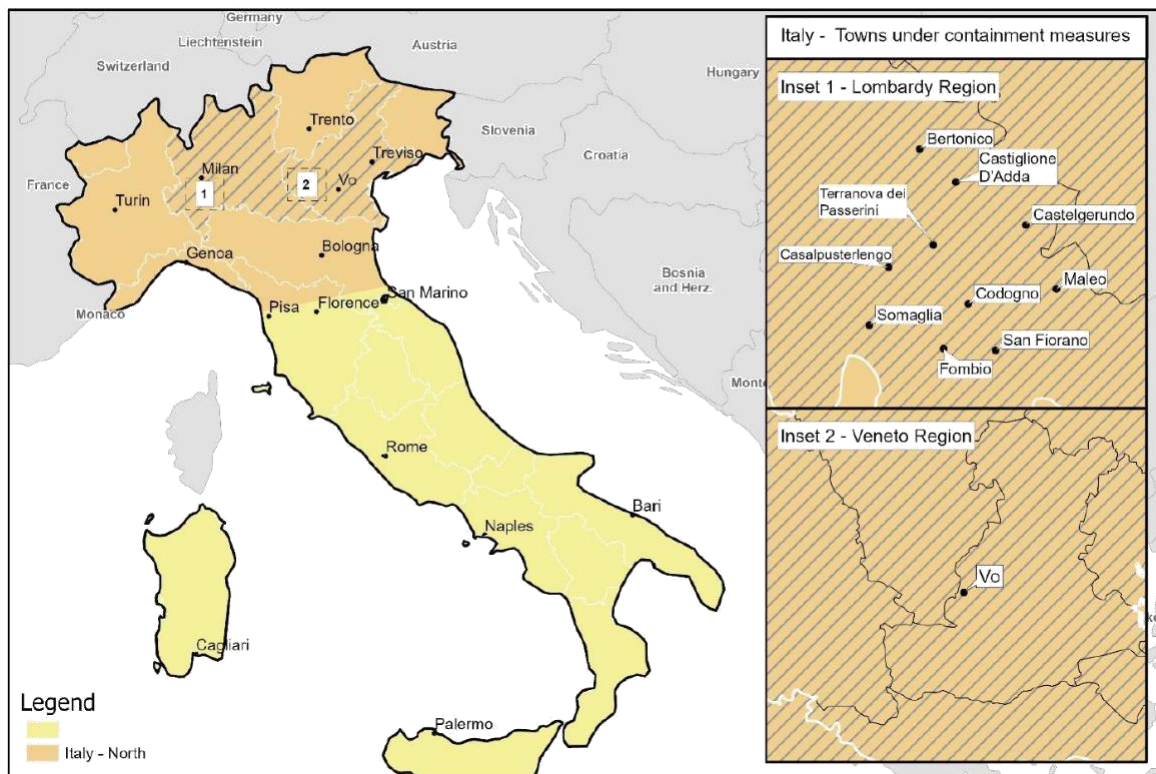


**Yellow area** – Category 2

**Orange area** – specified areas (see inset and listed below) are Category 1.

The specified areas are Daegu Metropolitan City and Cheongdo County.

Map showing specified areas of Italy, as of 25 February 2020.



**Yellow area** – no special measures

**Orange area** – specified towns (see inset and listed below) are Category 1. Otherwise orange areas are category 2.

The specified towns (see inset map) are in the regions of Lombardy and Veneto.

In the Lombardy Region:

- Bertonico
- Casalpusterlengo
- Castelgerundo
- Castiglione D'Adda
- Codogno
- Fombio
- Maleo
- San Fiorano
- Somaglia
- Terranova dei Passerini

In the Veneto Region:

- Vo